

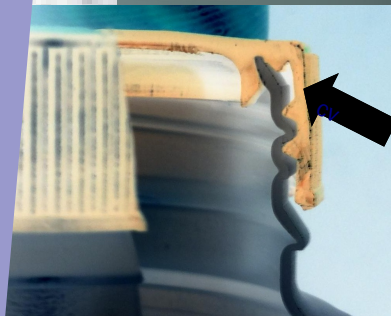
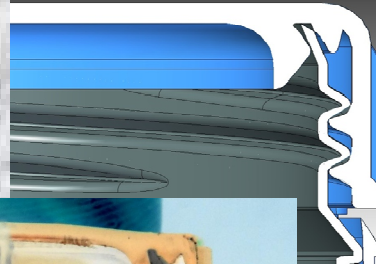
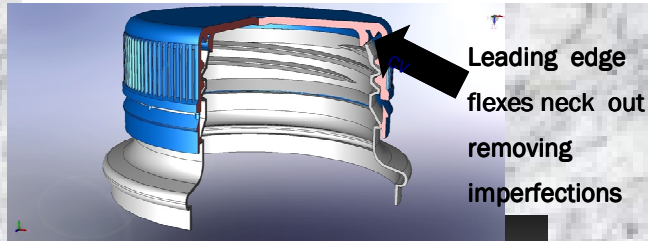
## BOSS CLOSURES 38mm Milk Closure

Boss Closures is pleased to present its patented tamper evident 38mm Bore Seal Milk Closure made specifically to work efficiently with its patented new milk bottle neck design allowing the neck to be captured within the closure eliminating leaks.

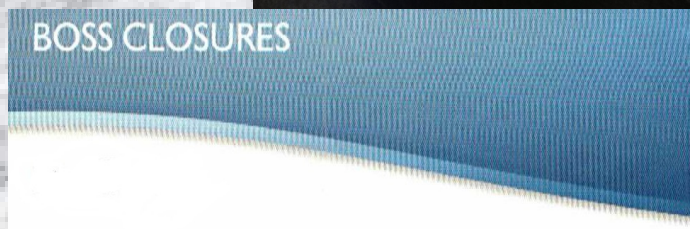
This closure is specifically designed to be:-

- Lightweight
- Fully Recyclable
- Low Cost
- Manufactured in Volume with low cost efficient production

Fully tested the closure allows users to meet their obligations under the National Packaging Covenant and reduce both cost and their carbon footprint over current heavy conventional wadded closures.



Neck provides an angled rim reducing the incidence of cocked caps.



## BOSS CLOSURES 38mm Milk Closure

Made for Australian conditions the closure deals effectively with necks that may be out of round or damaged in transit by flexing the neck out before pulling it into shape within the closure. This removes the imperfection assuring a leak proof seal.

Available in

- Printed designs if required.
- Your choice of color.

The neck design:-

- Significantly reduces the occurrence of "cocked" caps by providing a leading edge for cap application.
- Is backward compatible with wadded caps.
- Is available in 2,3, or 8 start threads.
- Cannot be over torqued on application.

BOSS CLOSURES



When ideas take shape, the satisfaction of our customer is our success.

## **Boss Closures**

Phone: +61 422 249 420

E-mail:

[info@bossclosures.com.au](mailto:info@bossclosures.com.au)